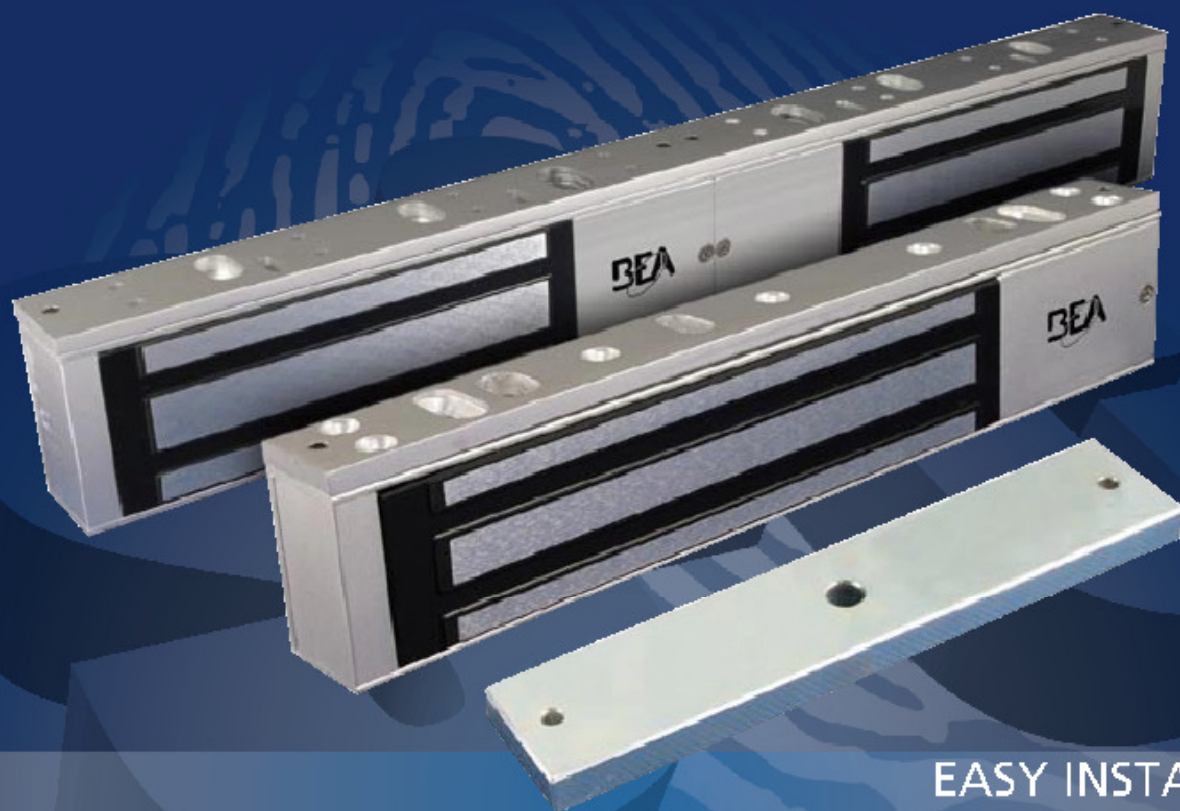




OPEN UP NEW HORIZONS
A HALMA COMPANY

MAGLOCKS

UL Listed Electromagnetic Locks



EASY INSTALLATION
MULTIPLE MODELS
ULTIMATE PROTECTION

Quality
Intelligence
Precision

BEA's Maglocks offer the ultimate protection for most access control applications.

- Lock status sensor (bond sensor) and visual LED on 600 and 1200 lb models
- Includes adjustable relock time delay (0 – 90 secs)
- Field selectable 12/24 VDC
- Installation hardware included for typical applications
- Convenient plug-in wire terminals
- Available for single doors and double doors without center mullion



MAGLOCK TECHNICAL SPECS

10MAGLOCK3UL Single
10MAGLOCK6UL Double



HOLDING FORCE
600 lbs

INPUT VOLTAGE
12 or 24 VDC

Note: This product is recommended to be used with a UL-Listed Power Supply

CURRENT DRAW
Single

0.50A @ 12VDC
0.25A @ 24VDC

Dual
1.00A @ 12VDC
0.50A @ 24VDC

DIMENSIONS
Single
9.84" x 1.85" x 1.02"
(250mm x 47mm x 26mm)

Dual
19.76" x 1.85" x 1.02"
(502mm x 47mm x 26mm)

HOLD TIMER
0-90 sec

10MAGLOCK1UL Single
10MAGLOCK5UL Double



HOLDING FORCE
1200 lbs

INPUT VOLTAGE
12 or 24 VDC

Note: This product is recommended to be used with a UL-Listed Power Supply

CURRENT DRAW
Single

0.50A @ 12VDC
0.25A @ 24VDC

Dual
1.03A @ 12VDC
0.52A @ 24VDC

DIMENSIONS
Single
10.47" x 2.91" x 1.58"
(266mm x 74mm x 40mm)

Dual
20.94" x 2.91" x 1.58"
(532mm x 74mm x 40mm)

HOLD TIMER
0-90 sec

MAGLOCK FAMILY OF PRODUCTS



10MAGLOCK1UL
1200LB - SINGLE



10MAGLOCK3UL
600LB - SINGLE



10MAGLOCK5UL
1200LB - DOUBLE



10MAGLOCK6UL
600LB - DOUBLE



10LZBRMAG1UL
(1) 'L' and (1) 'Z'



10LZBRMAG3UL
(1) 'L' and (1) 'Z'
use with
10MAGLOCK3UL



MAG5LZUL
MAG6LZUL
(2) 'L' and (2) 'Z'



10FILLER12UL
10FILLER34UL
FILLER BAR



10UBRACKETUL
U-Bracket - Glass Doors

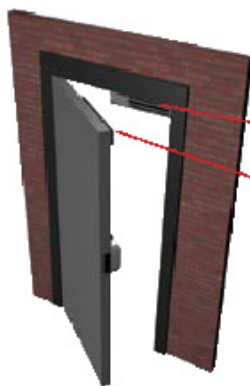


Vertical Spacer Bars



Armature Housing

MAGLOCK APPLICATIONS

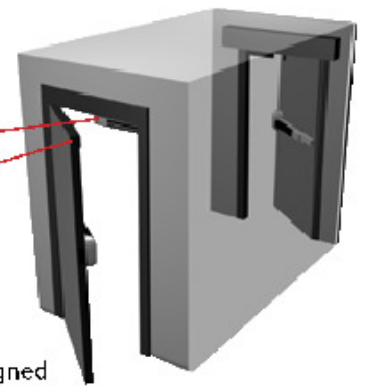


• Swinging Door Application

► Install BEA Maglocks in security applications including: portals in hotels, retail outlets or where egress control is needed

Maglocks

Armature Plate



• Clean Room / Airlock Application

► BEA Maglocks, when combined with BEA's other security products, are designed to ensure ultimate security in clean room, airlock, and also mantrap applications

RELATED PRODUCTS



Hy Kits
PR detector for Regions of Exit applications
no need Sensor, Chilling, and Surface Adapter



Power Supply
12 or 24 VDC with emergency backup option available



Push Buttons
Access Control push solution for any indoor application



Be2
Programmable 2 Relay logic module with 10 separate functions



MS08U
Touchless Push Plate and a full size keypad module for hygiene



1200 UL MAGLOCKS USER'S GUIDE

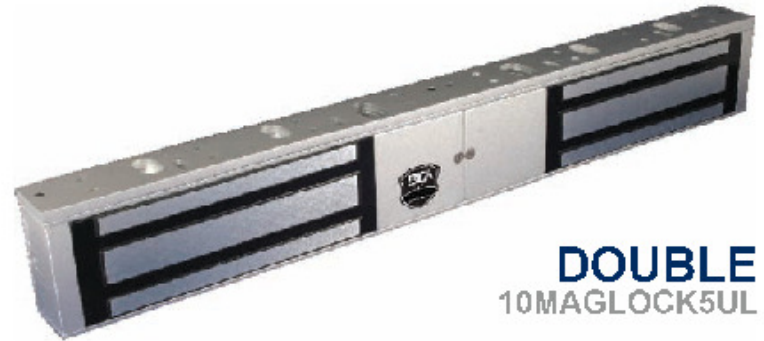
ELECTROMAGNETIC LOCK

1 Description

The Electromagnetic Lock (Maglock) series is a surface mounted magnetic lock assembly. Available in single and dual lock varieties and various sizes (force) designed for standard installation on most types of doors.



SINGLE
10MAGLOCK1UL



DOUBLE
10MAGLOCK5UL

2 Specifications

DESCRIPTION	10MAGLOCK1UL	10MAGLOCK5UL
Lock	Single	Double
Input Voltage (VDC)	12 or 24	12 or 24
Relay Rating: @ 24 VDC (amps)	1.0	1.0
Dimensions: inches (mm)	10.47 x 2.87 x 1.58 (266 x 73 x 40)	21.18 x 2.87 x 1.58 (532 x 73 x 40)
Certification:	UL	UL

3 Precautions

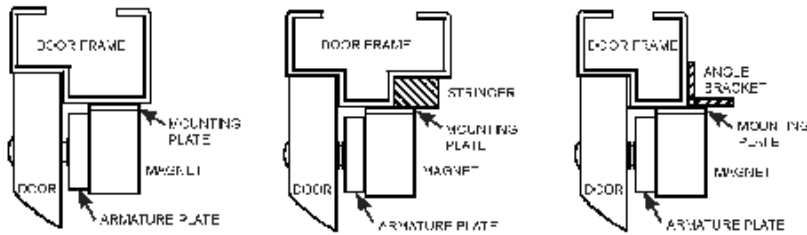


- ↳ Shut off all power before attempting any wiring procedures.
- ↳ Maintain a clean & safe environment when working in public areas.
- ↳ Constantly be aware of pedestrian traffic around the door area.
- ↳ Always stop pedestrian traffic through the doorway when performing tests that may result in unexpected reactions by the door.
- ↳ Always check placement of all wiring before powering up to insure moving door parts will not catch any wires and cause damage to equipment.
- ↳ Ensure compliance with all applicable safety standards and building codes upon completion of installation.

4 Installation - Mechanical

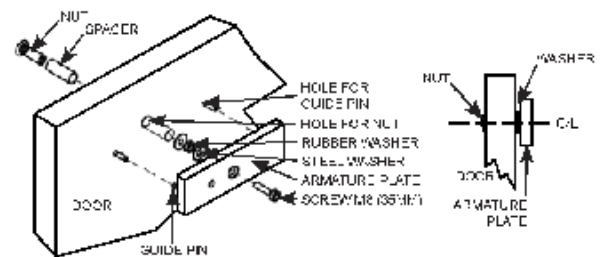
1. Handle the equipment with care. Damaging the mating surfaces of the magnet and armature plate may reduce locking efficiency.
2. The maglock mounts rigidly to the door frame. The armature plate mount to the door with the hardware provided. This allows the armature plate to pivot about its center to compensate for door wear and misalignment.
3. Template use must take place with the door in its normally closed position.
4. Add threadlocker to all screws before installing.
5. Firmly tighten screws.

4 Installation - Mechanical (Cont'd)



NOTE: DO NOT over-tighten the armature plate. The rubber washer is designed to allow the armature plate to automatically adjust position for best mating position between the lock and armature plate.

TYPICAL INSTALLATION



5 Installation - Electrical

NOTE: The product should only be powered by a UL listed power supply.

NOTE: If power switch is not wired between DC source voltage and magnet, it will take a longer time to de-energize the magnet simulating residual magnetism.

1. 12 VDC INPUT

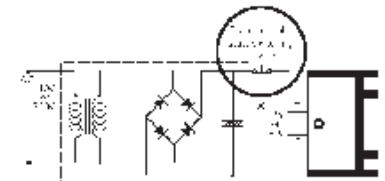
- A. Required power 0.5A (Max).
- B. Connect ground (-) lead from a 12 VDC power source to Terminal 2.
- C. Connect positive (+) lead from a 12 VDC power source to Terminal 1.
- D. Check jumper for 12 VDC operation.

2. 24 VDC INPUT

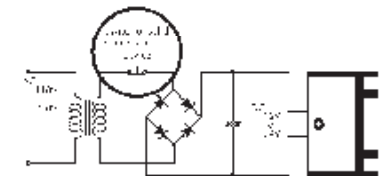
- A. Required power 0.25A (Max).
- B. Connect ground (-) lead from a 24 VDC power source to Terminal 2.
- C. Connect positive (+) lead from a 24 VDC power source to Terminal 1.
- D. Check jumper for 24 VDC operation.

3. CONTACTS

1. Relay dry contacts are rated 1A at 24 VDC for safe operation. DO NOT exceed this rating.
2. If a NO switch is required, connect the wires from the system to Terminal 4 & Terminal 3.
3. If a NC switch is required, connect the wires from the system to Terminal 4 & Terminal 5.



CORRECT



INCORRECT

