



# 1KXL

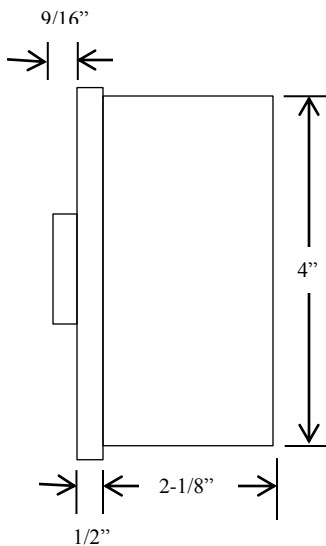
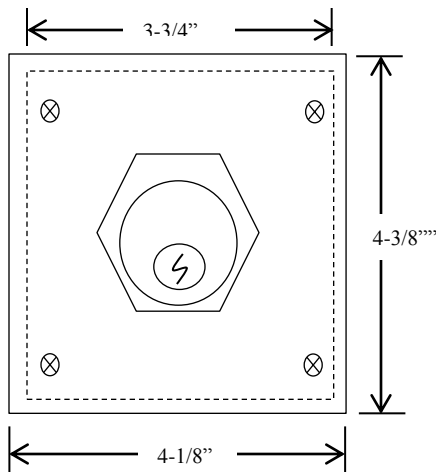
## KEYED CONTROL

- NEMA 3R, 4, 12
- SURFACE MOUNT
- TWO POSITION (ON-OFF)
- ALUMINUM DIE CAST ENCLOSURE
- CYLINDER: MORTISE TYPE (5 PIN)
- KEYSWITCH: 20 amp @ 125VAC
- KEYSWITCH: 15 amp @ 250VAC

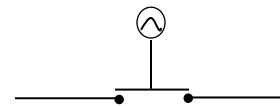
ON-OFF Keyswitch where power is activated when key turned to ON position and deactivated when key turned to OFF position.

AVAILABLE WITH BEST CORE CYLINDER OR EQUIVALENT, SLF TYPE LARGE FORMAT EQUIVALENT, CC (CHANGEABLE CYLINDER) VERSION

## DIMENSIONS



## WIRING



SHOWN IN "OFF" POSITION



230 Route 206, Suite 206  
 Flanders, NJ 07836  
 (800) 942-6682 \* (973) 584-6682 Fax  
 info@mmtcinc.com